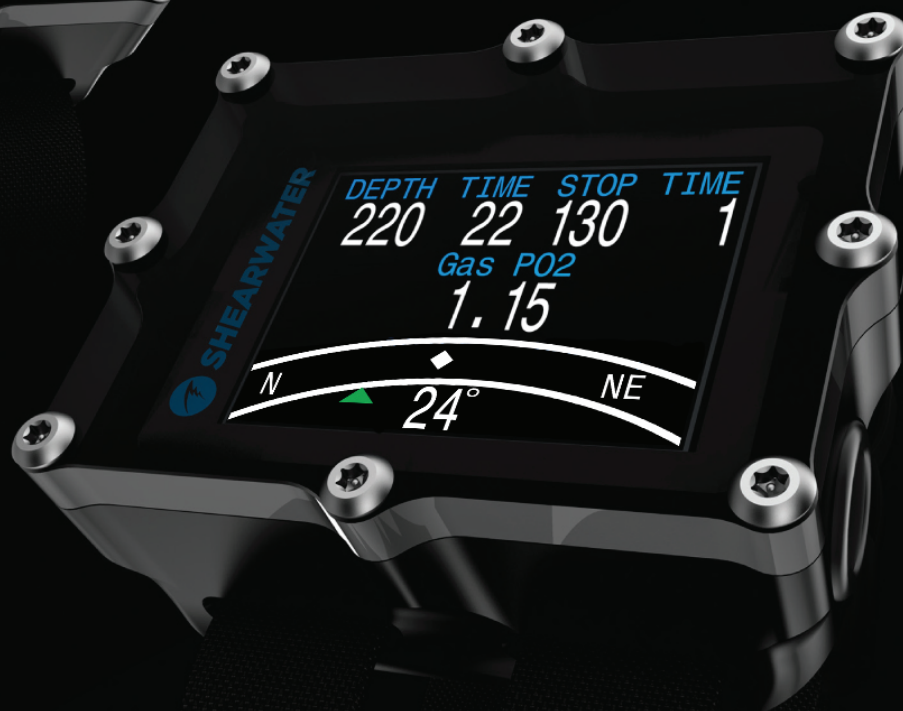


### 1,000-HOUR DIVE LOG

Our longest dive memory yet, transfers to your desktop via Bluetooth Smart Ready

### HIGH RESOLUTION DISPLAY

2.4" bright and clear full colour display



### AA BATTERY

The Petrel 2 works with any type of standard AA battery

### DIGITAL COMPASS

3 axis, tilt compensated, digital compass

### SIMPLE TO USE

Intuitive, state aware menu system



# PETREL2

## NEW FEATURES: Digital compass and Bluetooth Smart Ready

The Petrel 2 is the next generation in rugged and reliable technical diving computers from Shearwater Research. Available with or without Fischer connector, it clearly presents all the information you need to see at a glance. Whether you are diving a rebreather, twins or side mount, you can rely on the Shearwater Petrel 2 during your next expedition.



**SHEARWATER**

Powerful • Simple • Reliable

# RUGGED TECHNICAL DIVE COMPUTERS



**PETREL 2**  
STANDALONE



**PETREL 2**  
W/FISCHER CONNECTOR

# SHEARWATER DESKTOP SOFTWARE

AVAILABLE FOR MAC & PC

## FEATURES

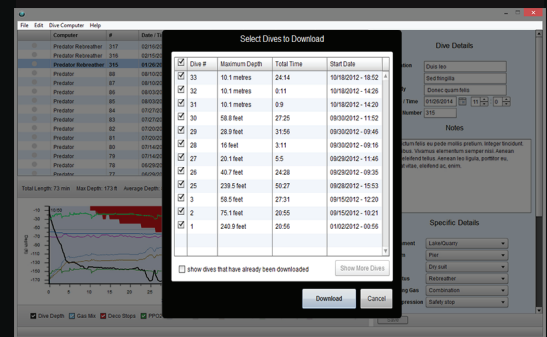
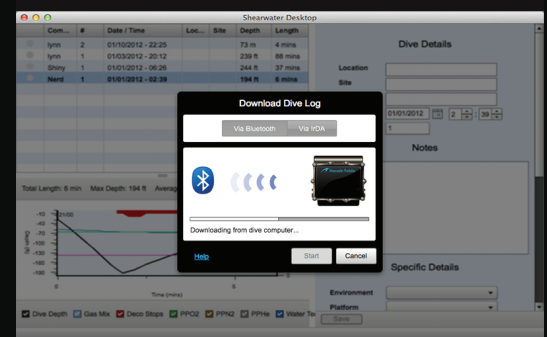
<b>NEW:</b> 3 axis, tilt compensated, digital compass	✓	✓
<b>NEW:</b> Bluetooth Smart Ready for iOS integration	✓	✓
Decompression Computer	✓	✓
Open Circuit	✓	✓
Trimix / Nitrox / Air Compatible	✓	✓
Bühlmann GF	✓	✓
Rebreather	✓	✓
Closed Circuit Fixed PP02	✓	✓
Closed Circuit External PP02	✓	✓
Semi-Closed Circuit External PP02	✓	✓
Gauge Mode	✓	✓
Bluetooth Smart Ready Enabled	✓	✓
Upgradeable Firmware	✓	✓
Bungee Compatible	✓	✓

## SPECIFICATIONS

Screen Resolution	320x240 QVGA	
Display Type	Full Colour LED LCD	
Battery Type	Single AA (Any Type)	
Battery Life	35 Hours (AA Alkaline) 100 Hours (SAFT LS14500)	
Number of Gases	5 OC and 5 CC	
Rebreather Connectivity	Fischer 103, 7-pin	
Dive Log	1,000 Hours	
Dimensions		
Computer (WxHxD)	83 x 74 x 39 mm (3.3" x 2.9" x 1.5")	
Fischer Connector (HxØ)	18 x 13 mm (0.7" x 0.5")	
Package (WxHxD)	120 x 100 x 77 mm (4.7" x 3.9" x 3")	
Weight		
Computer	260g (0.57 lbs)	280g (0.62 lbs)
Package	360g (0.79 lbs)	380g (0.83 lbs)

## OPTIONAL ADD-ONS & ACCESSORIES

Zippered Pouch	✓	✓
VPM-B Unlock Code	✓	✓



# VPM-B

**Bluetooth**  
SMART READY

# SHEARWATER

Powerful • Simple • Reliable

[www.shearwater.com](http://www.shearwater.com)

[www.youtube.com/user/ShearwaterResearch](http://www.youtube.com/user/ShearwaterResearch)